



Single Stream Recycling ***Are Incentive Programs a Panacea?***



Allen Lynch
North Shore Recycling Program
May 31, 2011



vancouver.ca

How do incentive programs work?

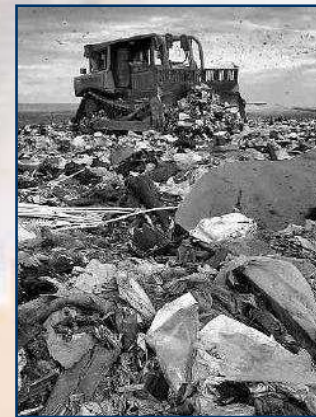


=

\$

Pros of Incentive-Based Programs

- Increased participation and diversion
- Reduced landfill tipping fees
- Information sourcing



Cons of Incentive-Based Programs

- Increased consumption
- Single stream collection required
- Contamination and reduced quality of recycling



edcodisposal.com

Cons of Incentive-Based Programs

- Long-term contracts
- Higher collection costs
- High administrative costs



Cons of Incentive-Based Programs

- Larger containers
- Privacy concerns



Where Do Incentive-Based Programs Work Best?

Areas with:

- Low participation and diversion
- Single-stream collection
- Single-stream MRFs



burbankrecycling.com

Where Do Incentive-Based Programs Work Best?

Areas with:

- Low-income communities
- High disposal costs
- Inadequate communications



Where Do Incentive-Based Programs Not Work?

Areas with:

- Successful source-separated collection programs
- No Single-stream MRFs
- Revenue sharing programs



Where Do Incentive-Based Programs Not Work?

Areas with:

- Bottle bills
- Pay-as-you-throw programs
- Long-term contracts



accessfayetteville.org

Where Do Incentive-Based Programs Not Work?

Areas with:

- Local government owned landfills or low tipping fees
- Material disposal bans
- EPR programs



A photograph showing a large, messy pile of discarded waste. In the center, there is a stack of three white plastic cups. To the left, there are several pieces of white paper, some of which appear to be receipts or documents. The background is filled with various other pieces of trash, including crumpled paper, plastic containers, and what looks like a newspaper or magazine. The overall scene suggests a large amount of waste that has been thrown away. The word "Questions?" is written in a bold, blue, italicized font across the middle of the image.

Questions?



Contact Information

**Allen Lynch, Manager
North Shore Recycling Program**

allen@nsrp.bc.ca